

# Assessment of proton beam ablation in myocardial infarct tissue using delayed contrast-enhanced magnetic resonance imaging (Erratum)

M. E. Rettmann,<sup>1</sup> S. Hohmann,<sup>1</sup> A. J. Deisher,<sup>1</sup> H. Konishi,<sup>1</sup> J. J. Kruse,<sup>1</sup> L. K. Newman,<sup>1</sup> K. D. Parker,<sup>1</sup> M. G. Herman,<sup>1</sup> D. L. Packer<sup>1</sup>

<sup>1</sup>Mayo Clinic (United States)

[Proceedings Volume 11315, Medical Imaging 2020: Image-Guided Procedures, Robotic Interventions, and Modeling](#); 1131511 (2020) <https://doi.org/10.1117/12.2550659>

Event: [SPIE Medical Imaging](#), 2020, Houston, Texas, United States

Online Publication Date: 16 March 2020

Erratum Published: 28 April 2020

*A revised version of this manuscript was published on 28 April 2020. Details of the revision are provided in the text that accompanies this Erratum. The original paper has been updated.*

Figure 1 has been updated with figures that more clearly illustrate the workflow of registering the images and transferring the contour.

Original version:

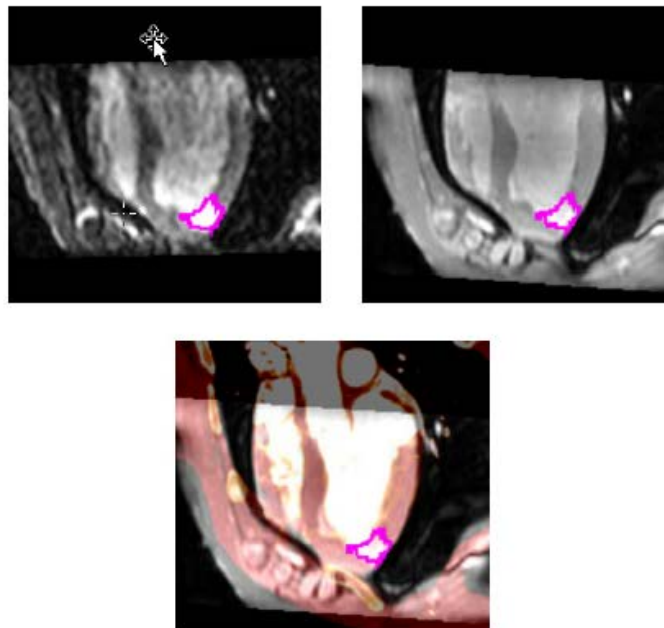


Figure 1. Segmented scar (magenta) on DCE-MRI scan (top left), FIESTA scan (top right), and CT scan (bottom). Bottom figure shows CT (hot metal color scale) overlaid on anatomic FIESTA image (grayscale).

Revised version:

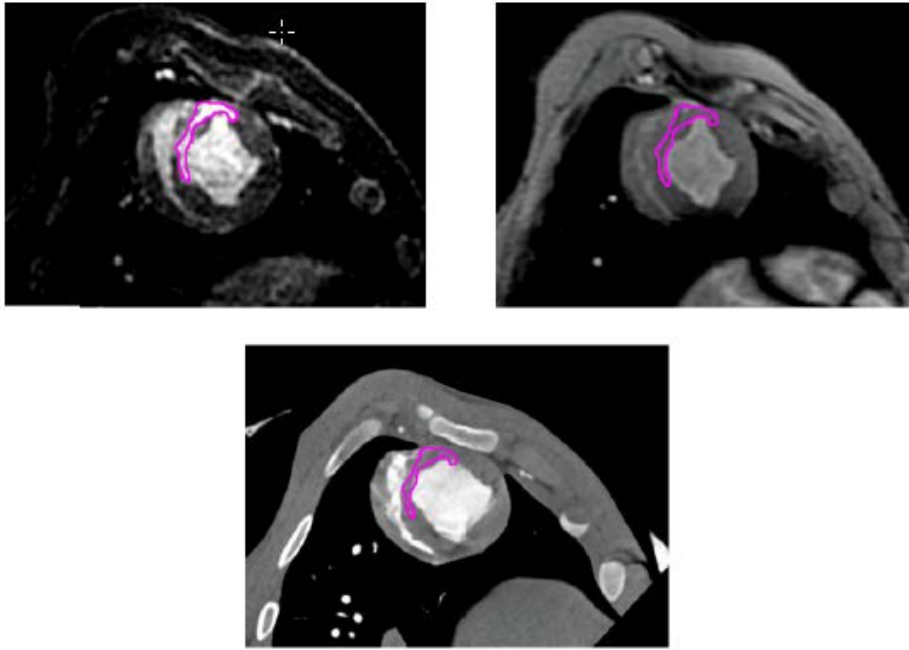


Figure 1. Segmented scar (magenta) on DCE-MRI scan (top left), FIESTA scan (top right), and CT scan (bottom).